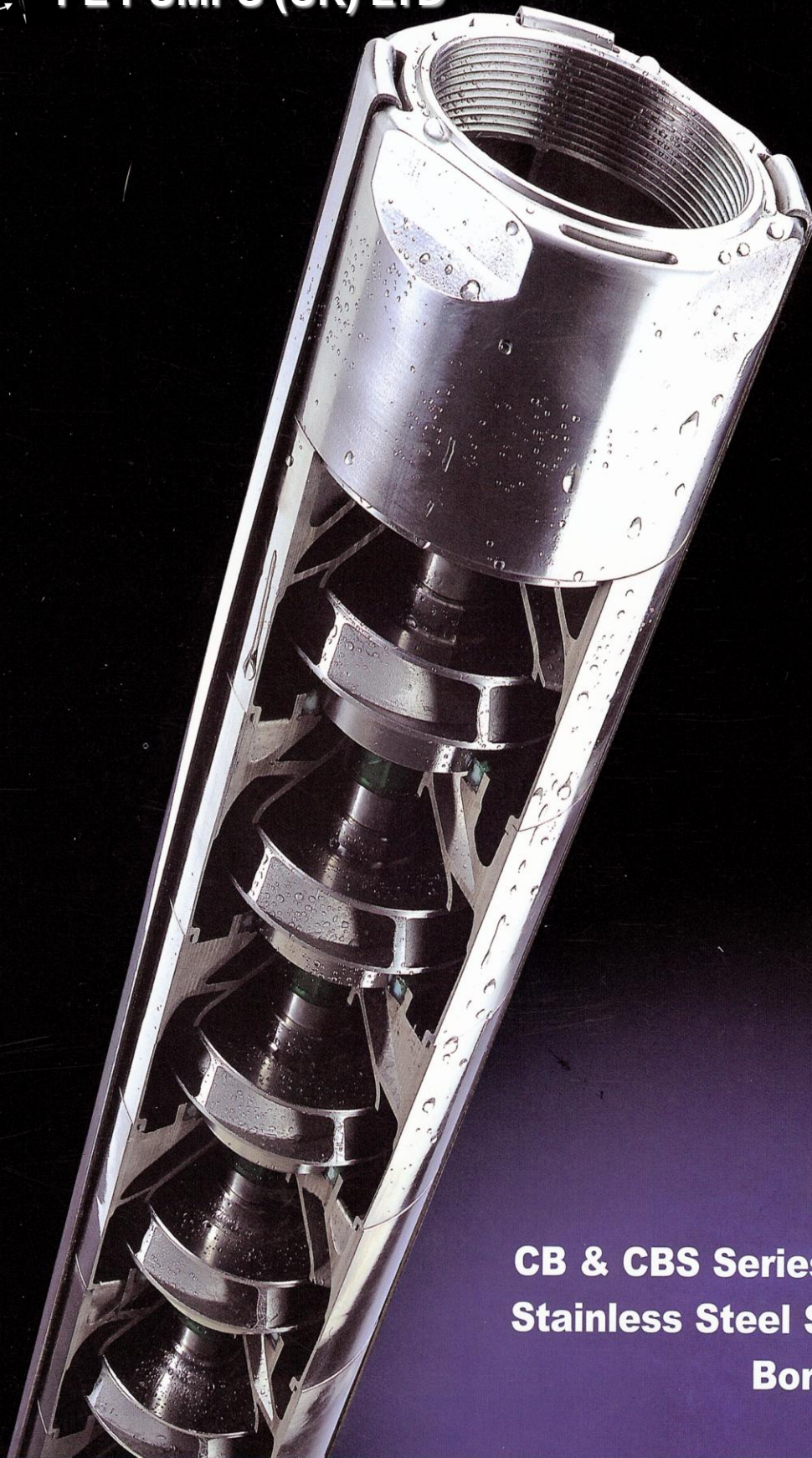




PE PUMPS (UK) LTD



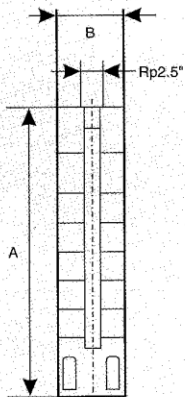
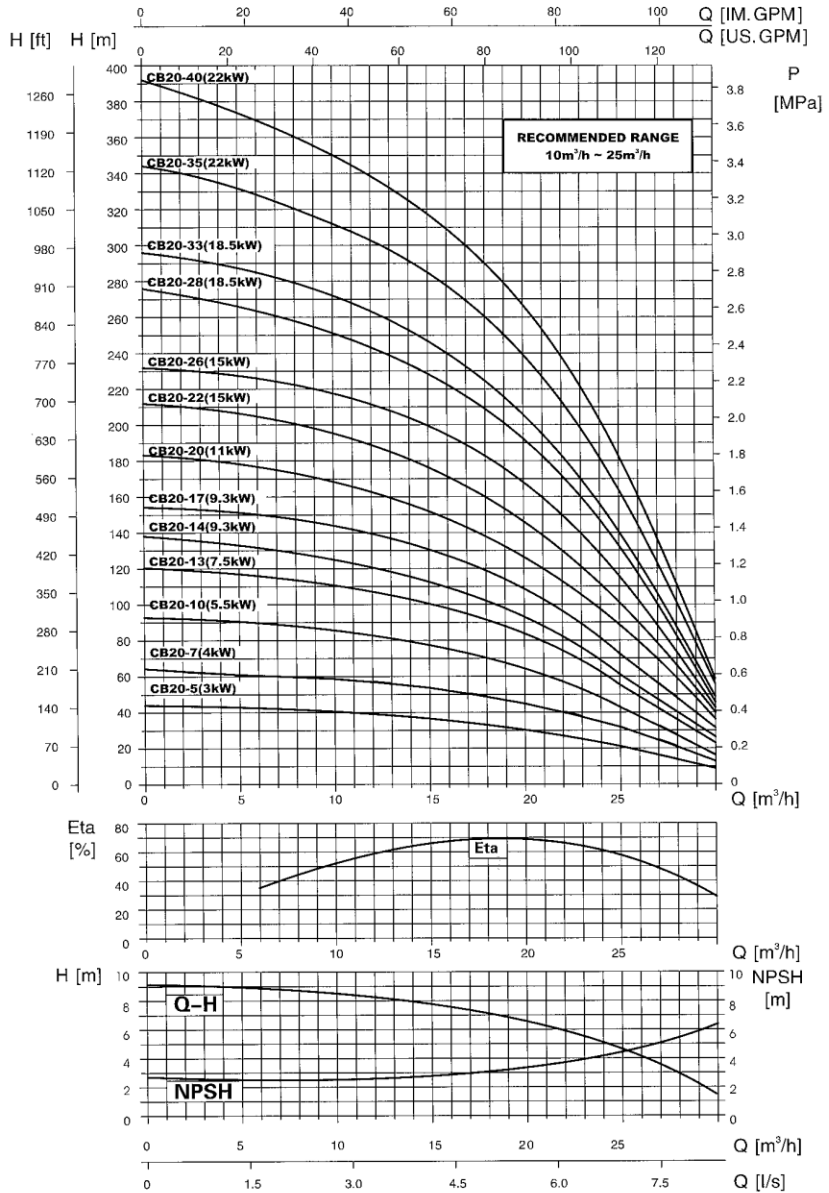
**CB & CBS Series 6" Casting
Stainless Steel Submersible
Borehole Pump**

PERFORMANCE TABLE (50Hz)

Model	Power (Kw)	Q:(l/min) Q:(m³/h)	150	200	250	300	350	400	450	500	550	600	650	700	750	800	850	900	950	1000	1050	1100	
			9	12	15	18	21	24	27	30	33	36	39	42	45	48	51	54	57	60	63	66	
CB20-5	3	H:(m)	41	39	37	34	30	24	17														
CB20-7	4		59	56	53	49	43	35	25														
CB20-10	5.5		86	82	78	70	60	48	32														
CB20-13	7.5		112	107	100	91	78	62	44														
CB20-14	9.3		125	120	113	102	88	70	48														
CB20-17	9.3		144	138	130	118	102	80	56														
CB20-20	11		170	163	152	140	120	96	67														
CB20-22	15		196	188	178	160	138	108	72														
CB20-26	15		220	212	202	183	156	124	82														
CB20-28	18.5		254	246	232	212	182	144	92														
CB20-33	18.5		276	264	248	226	196	156	100														
CB20-35	22		316	305	289	265	224	178	116														
CB20-40	22		357	340	319	292	252	196	128														
CB30-3	3		H:(m)					26	25	23	21	20	18	16									
CB30-4	4						35	33	31	28	26	23	18										
CB30-6	5.5						52	49	26	43	38	34	27										
CB30-8	7.5						70	68	62	58	52	44	36										
CB30-10	9.3						86	82	76	71	64	56	46										
CB30-13	11						113	107	100	93	84	74	62										
CB30-14	15						136	131	124	116	105	94	77										
CB30-17	15						146	140	132	124	112	100	82										
CB30-18	18.5						170	165	156	146	132	117	94										
CB30-21	18.5						186	178	168	157	142	126	101										
CB30-23	22						216	208	197	185	166	146	117										
CB30-26	22						229	220	208	195	176	156	125										
CB30-29	30						272	263	250	235	212	186	150										
CB30-34	30						301	288	272	253	229	200	161										
CB46-5	7.5	H:(m)							53	51	48	46	42	38	34	29							
CB46-6	9.3									63	61	58	55	51	46	41	34						
CB46-7	11									73	70	67	63	59	54	47	40						
CB46-9	15									94	90	86	82	76	70	62	52						
CB46-12	18.5									123	118	113	107	100	91	82	70						
CB46-15	22									156	151	143	135	125	115	102	88						
CB46-16	30									188	182	176	168	158	144	127	109						
CB46-20	30									210	204	195	184	172	156	138	118						
CB46-23	37									242	234	225	214	200	183	160	136						
CB60-4	7.5		H:(m)												41	40	38	35	32	29	25	20	
CB60-5	9.3														51	48	45	42	38	34	29	24	
CB60-6	11														61	58	54	50	45	40	34	28	
CB60-8	15														81	77	72	67	61	54	46	37	
CB60-10	18.5														101	96	90	83	75	67	58	47	
CB60-12	22														121	115	108	100	90	80	68	56	
CB60-14	30														152	144	135	125	114	102	89	73	
CB60-16	30														174	167	157	145	132	117	100	83	
CB60-18	37														188	180	168	156	142	124	108	90	
CB60-20	37														210	201	189	174	159	140	121	100	

Performance curve

CB20
2900rpm
50HZ



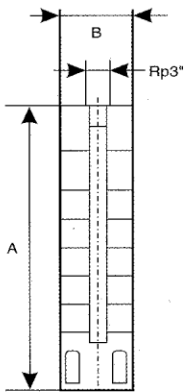
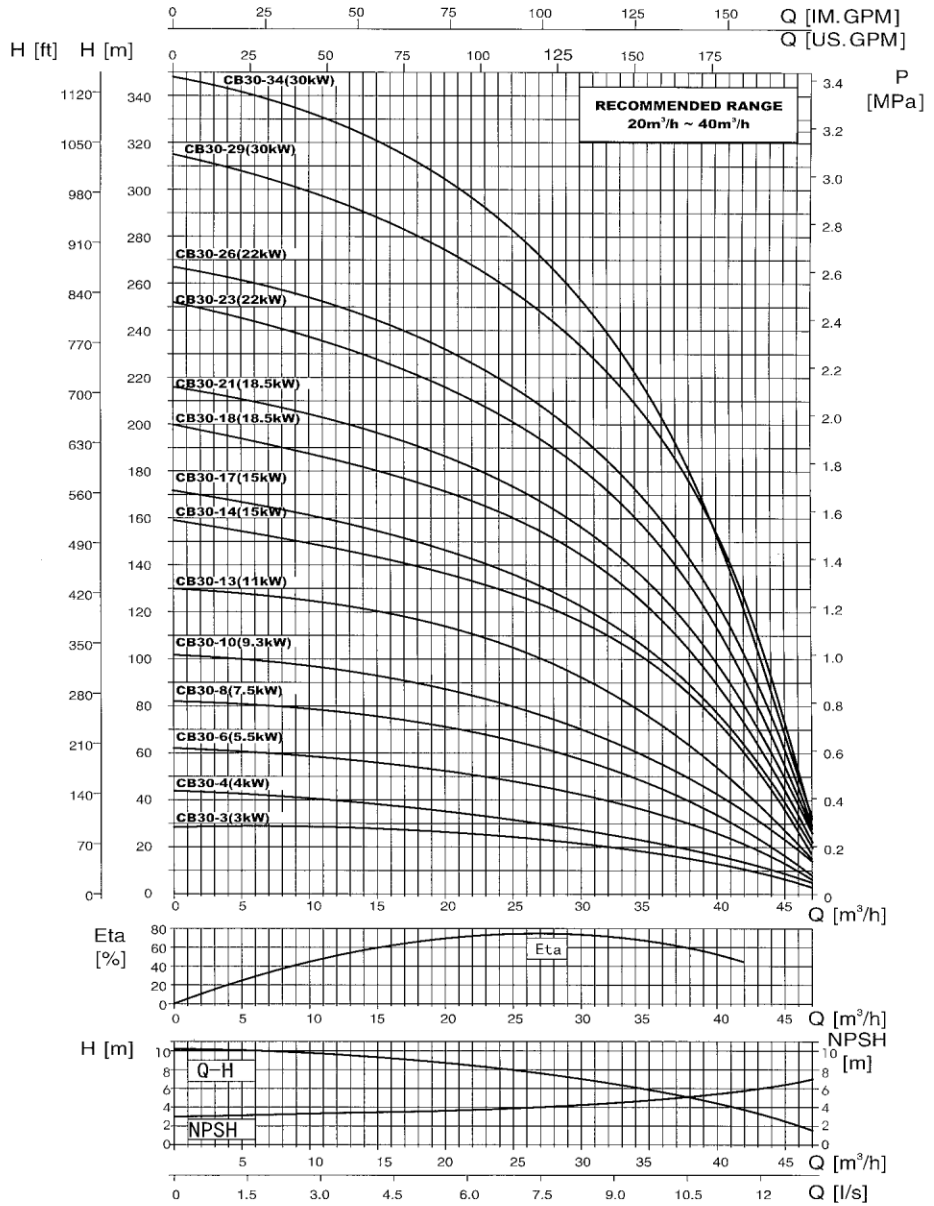
Pump Type	Motor			Dimension(mm)		Net Weight(Kg)
	Type	Power		Pump		Pump
		kW	HP	A	B	
CB20-5	4"Motor	3.00	4.00	548	132	14.50
CB20-7	4"Motor	4.00	5.50	665	132	18.00
CB20-10	4"Motor	5.50	7.50	853	132	23.50
CB20-13	6"Motor	7.50	10.00	1032	132	31.00
CB20-14	6"Motor	9.30	12.50	1092	132	33.50
CB20-17	6"Motor	9.30	12.50	1272	132	40.00
CB20-20	6"Motor	11.00	15.00	1452	132	45.50
CB20-22	6"Motor	15.00	20.00	1572	132	49.50
CB20-26	6"Motor	15.00	20.00	1812	132	56.50
CB20-28	6"Motor	18.50	25.00	1932	132	60.50
CB20-33	6"Motor	18.50	25.00	2232	132	70.50
CB20-35	6"Motor	22.00	30.00	2352	132	74.00
CB20-40	6"Motor	22.00	30.00	2655	132	83.00

Performance curve

CB30

2900rpm

50HZ

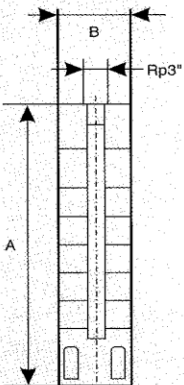
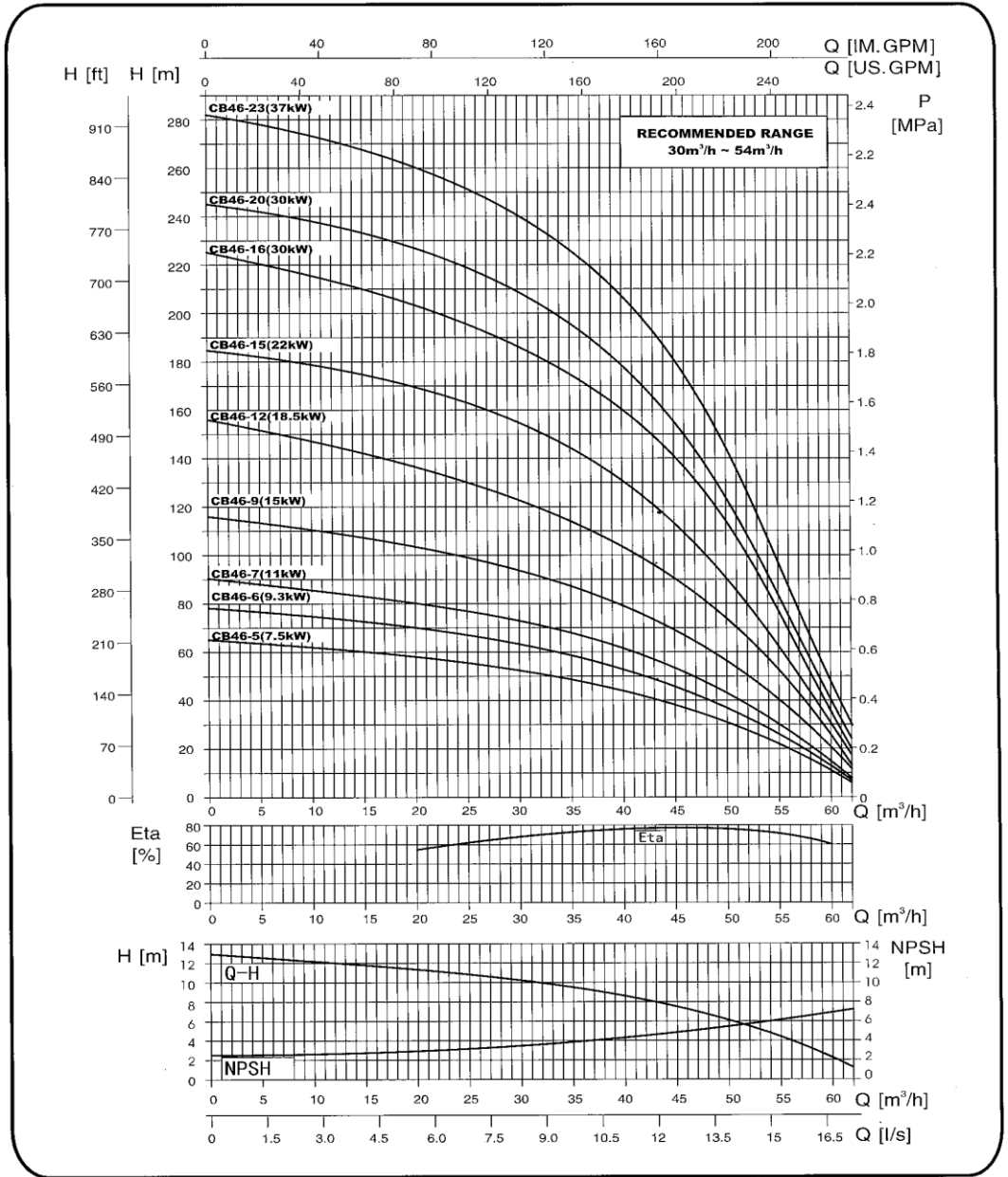


Pump Type	Motor		Dimension(mm)		Net Weight(Kg)	
	Type	Power	Pump			
		kW	HP	A	B	Pump
CB30-3	4"Motor	3.00	4.00	511	133	13.00
CB30-4	4"Motor	4.00	5.50	595	133	15.50
CB30-6	4"Motor	5.50	7.50	765	133	21.00
CB30-8	6"Motor	7.50	10.00	930	133	27.50
CB30-10	6"Motor	9.30	12.50	1098	133	33.00
CB30-13	6"Motor	11.00	15.00	1348	133	41.00
CB30-14	6"Motor	15.00	20.00	1430	133	44.00
CB30-17	6"Motor	15.00	20.00	1680	133	52.00
CB30-18	6"Motor	18.50	25.00	1763	133	54.50
CB30-21	6"Motor	18.50	25.00	2012	133	62.50
CB30-23	6"Motor	22.00	30.00	2178	133	67.50
CB30-26	6"Motor	22.00	30.00	2427	133	75.50
CB30-29	6"Motor	30.00	40.00	2676	133	83.50
CB30-34	6"Motor	30.00	40.00	3091	133	97.00

Performance curve

CB46

50HZ 2900rpm



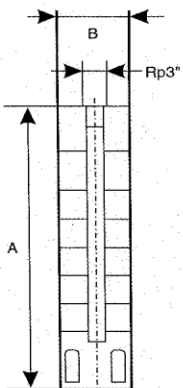
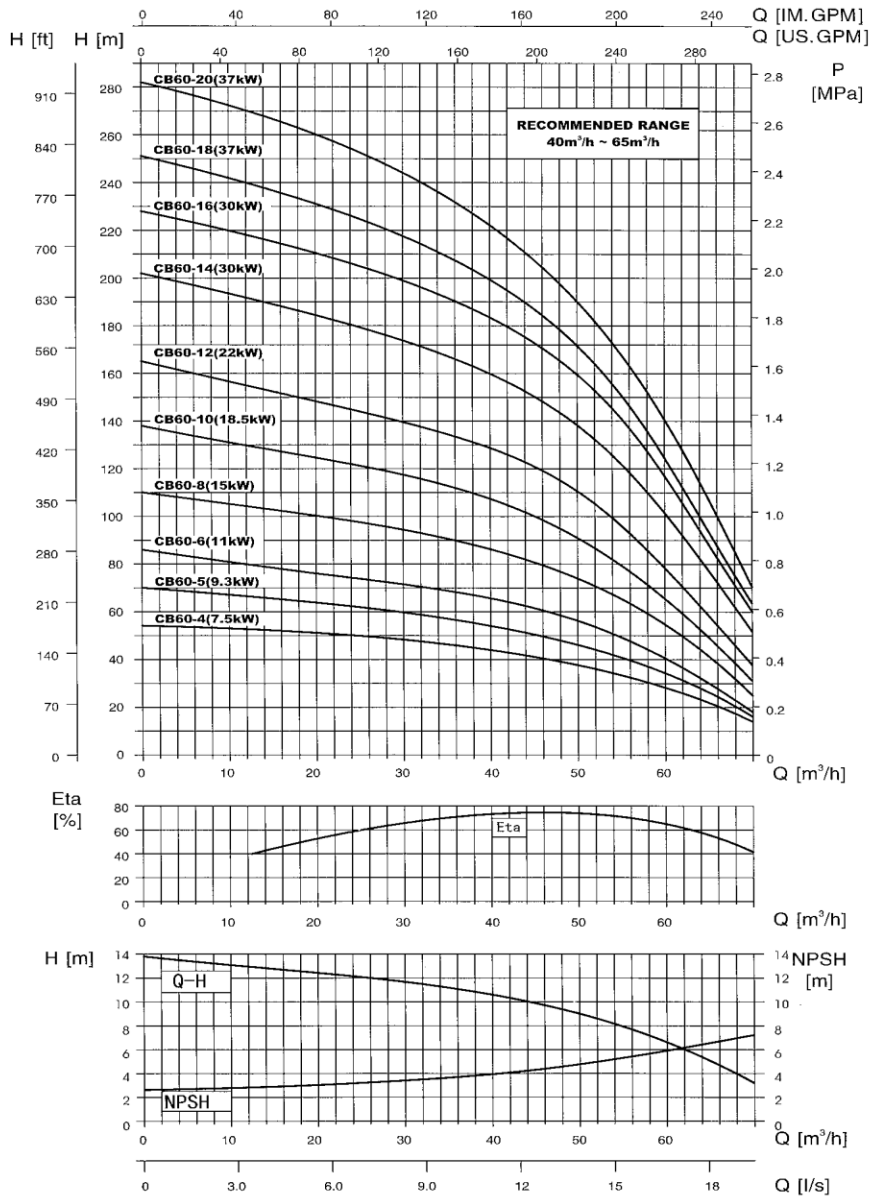
Pump Type	Motor			Dimension(mm)		Net Weight(Kg)
	Type	Power		Pump		Pump
		kW _t	HP	A	B	
CB46-5	6"Motor	7.50	10.00	745	144	23.00
CB46-6	6"Motor	9.30	12.50	839	144	26.50
CB46-7	6"Motor	11.00	15.00	932	144	29.50
CB46-9	6"Motor	15.00	20.00	1122	144	36.00
CB46-12	6"Motor	18.50	25.00	1404	144	46.00
CB46-15	6"Motor	22.00	30.00	1686	144	56.00
CB46-16	6"Motor	30.00	40.00	1780	144	59.00
CB46-20	6"Motor	30.00	40.00	2156	144	72.00
CB46-23	6"Motor	37.00	50.00	2440	144	82.00

Performance curve

CB60

2900rpm

50HZ



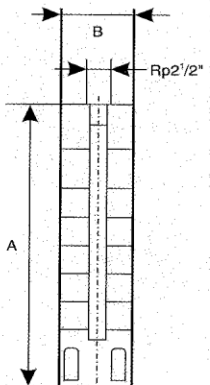
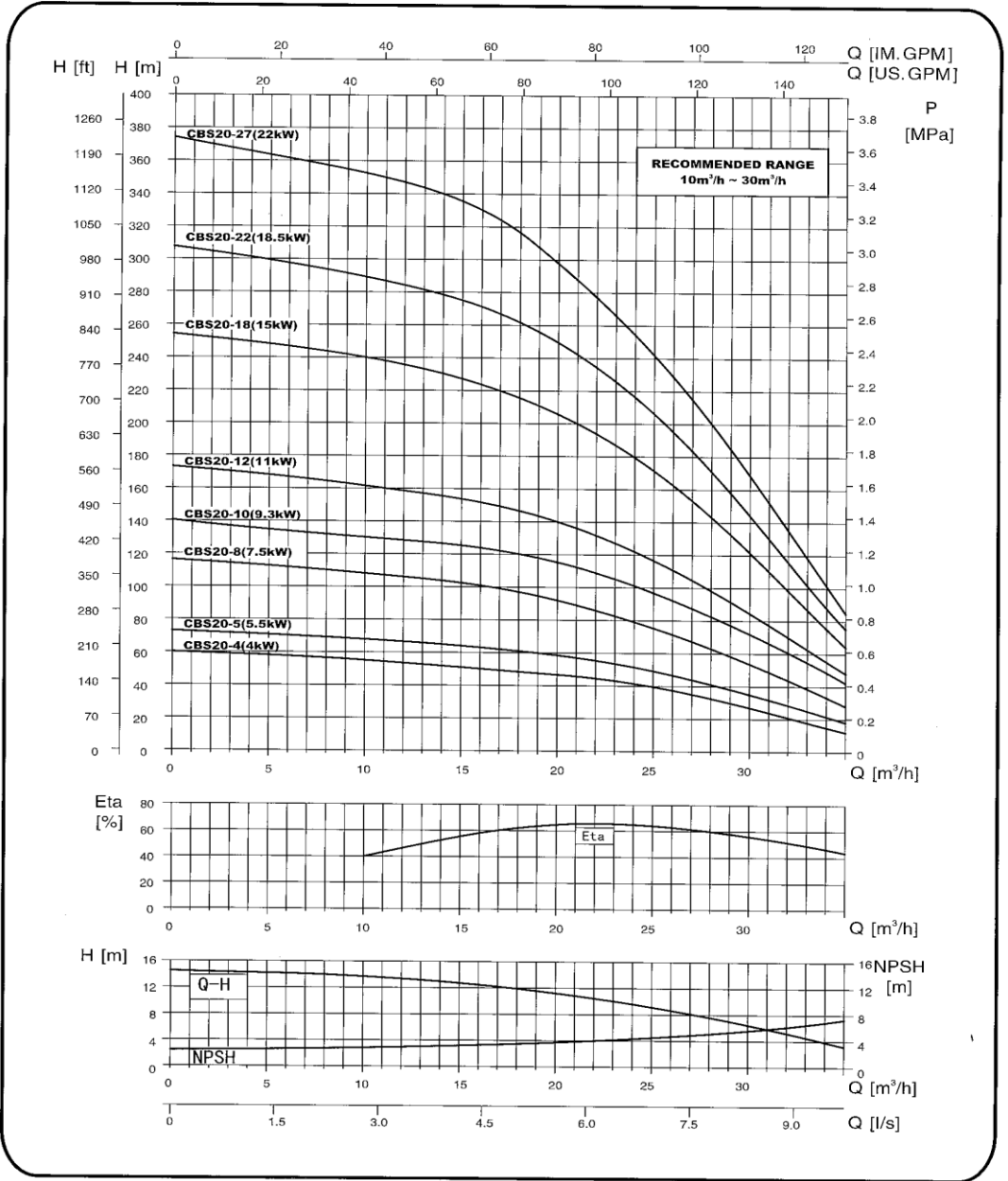
Pump Type	Motor		Dimension(mm)		Net Weight(Kg)	
	Type	Power		Pump		
		kW	HP	A	B	Pump
CB60-4	6"Motor	7.50	10.00	655	144	20.00
CB60-5	6"Motor	9.30	12.50	745	144	23.00
CB60-6	6"Motor	11.00	15.00	839	144	26.50
CB60-8	6"Motor	15.00	20.00	1030	144	34.00
CB60-10	6"Motor	18.50	25.00	1218	144	40.00
CB60-12	6"Motor	22.00	30.00	1404	144	47.00
CB60-14	6"Motor	30.00	40.00	1592	144	55.00
CB60-16	6"Motor	30.00	40.00	1780	144	61.50
CB60-18	6"Motor	37.00	50.00	1968	144	68.00
CB60-20	6"Motor	37.00	50.00	2156	144	73.00

PERFORMANCE TABLE (60Hz)

Model	Power	Q:(l/min)	150	200	250	300	350	400	450	500	550	600	650	700	750	800	850	900	950	1000	1050	1100	1166	
	(kW)	Q:(m ³ /h)	9	12	15	18	21	24	27	30	33	36	39	42	45	48	51	54	57	60	63	66	70	
CBS20-4	4	H(m)	55	54	51	48	46	39	34	27														
CBS20-5	5.5		69	67	64	61	56	50	43	35														
CBS20-8	7.5		109	106	102	96	89	79	67	54														
CBS20-10	9.3		132	128	125	120	112	102	88	73														
CBS20-12	11		163	157	154	148	136	121	106	85														
CBS20-18	15		241	240	226	216	201	179	153	120														
CBS20-22	18.5		290	284	275	263	246	219	185	146														
CBS20-27	22		355	347	336	319	293	257	215	169														
CBS30-3	5.5	H(m)					44	43	42	40	38	36	34	31										
CBS30-5	7.5						71	69	68	65	63	60	56	52										
CBS30-6	9.3						86	84	82	79	76	72	67	61										
CBS30-7	11						102	99	96	93	90	85	79	72										
CBS30-11	15						157	153	149	143	137	135	121	111										
CBS30-14	18.5						199	195	189	182	178	164	153	140										
CBS30-18	22						252	246	239	230	220	197	194	177										
CBS30-21	30						298	290	281	272	260	246	229	210										
CBS46-3	7.5	H(m)									50	48	47	45	43	41	38	35	32					
CBS46-4	9.3											67	65	63	60	58	54	51	47	43				
CBS46-5	11											83	81	78	75	72	68	64	60	54				
CBS46-7	15											113	111	108	104	99	94	88	81	73				
CBS46-9	18.5											147	143	137	134	128	122	114	105	95				
CBS46-11	22											180	175	170	164	157	149	140	129	116				
CBS46-15	30											245	239	233	226	217	206	194	179	164				
CBS60-3	9.3	H(m)												49	48	47	46	44	43	41	39	38	35	
CBS60-4	11														66	64	63	61	59	57	54	52	50	45
CBS60-5	15														83	81	79	77	74	71	68	66	62	56
CBS60-7	18.5														116	113	110	107	104	100	95	90	85	78
CBS60-8	22														133	130	127	124	120	116	111	104	100	92
CBS60-11	30														182	178	174	170	166	161	155	148	140	130
CBS60-13	37														215	211	206	200	194	188	180	171	162	150

Performance curve

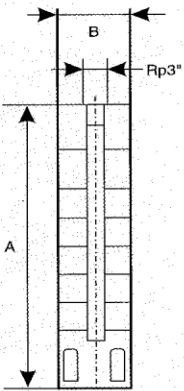
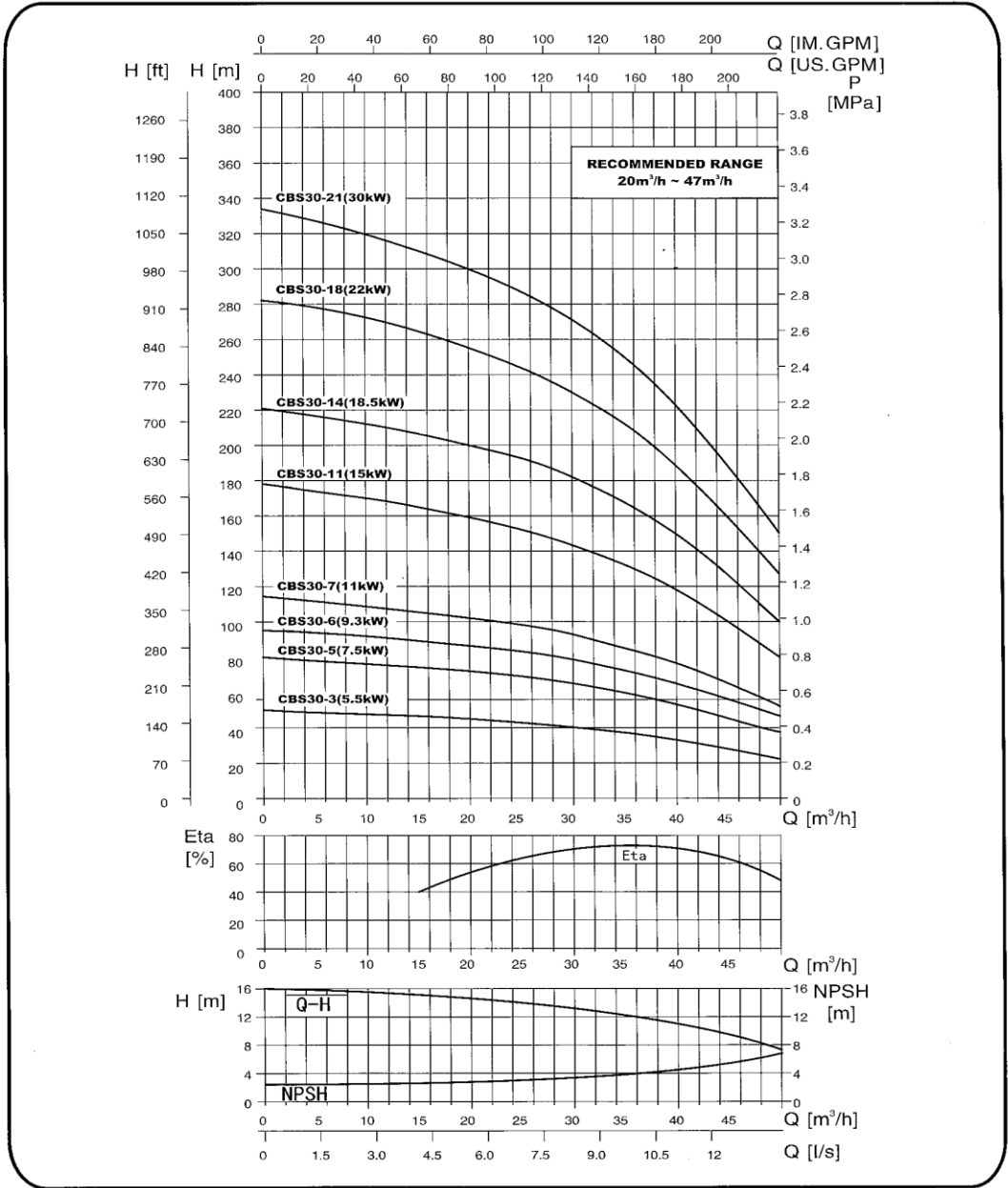
CBS20
3450rpm
60Hz



Pump Type	Motor		Dimension(mm)		Net Weight(Kg)	
	Type	Power		Pump		Pump
		kW	HP	A	B	
CBS20-4	4"Motor	4.00	5.50	488	132	12.80
CBS20-5	4"Motor	5.50	7.50	548	132	14.80
CBS20-8	6"Motor	7.50	10.00	732	132	19.80
CBS20-10	6"Motor	9.30	12.50	853	132	23.50
CBS20-12	6"Motor	11.00	15.00	973	132	29.20
CBS20-18	6"Motor	15.00	20.00	1334	132	41.70
CBS20-22	6"Motor	18.50	25.00	1572	132	49.50
CBS20-27	6"Motor	22.00	30.00	1872	132	58.50

Performance curve

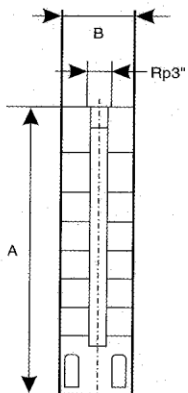
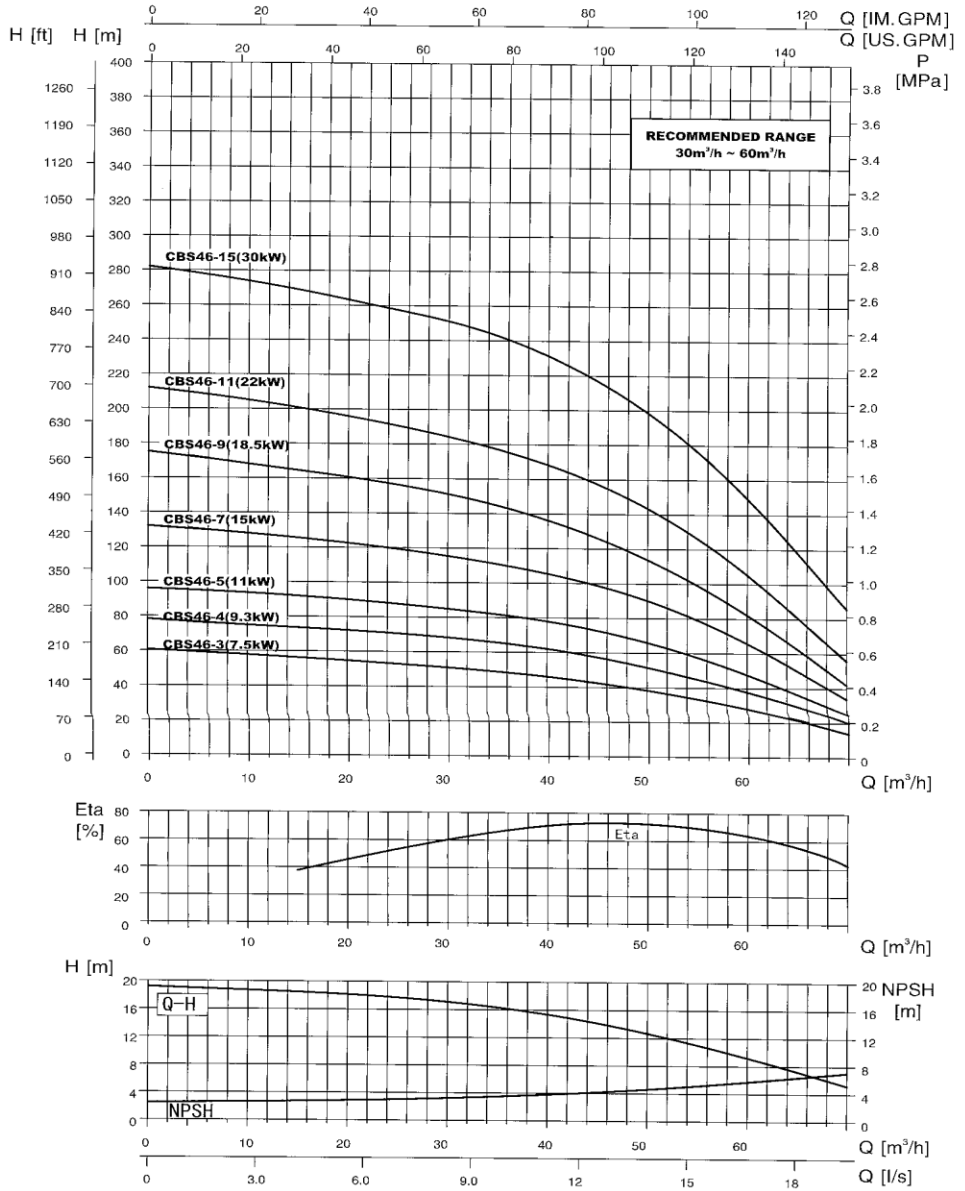
CBS30
 3450rpm
 60Hz



Pump Type	Motor		Dimension(mm)		Net Weight(Kg)	
	Type	Power		Pump		Pump
		kW	HP	A	B	
CBS30-3	4"Motor	5.50	7.50	511	133	13.00
CBS30-5	6"Motor	7.50	10.00	685	133	18.50
CBS30-6	6"Motor	9.30	12.50	765	133	21.00
CBS30-7	6"Motor	11.00	15.00	850	133	24.50
CBS30-11	6"Motor	15.00	20.00	1183	133	35.50
CBS30-14	6"Motor	18.50	25.00	1430	133	44.00
CBS30-18	6"Motor	22.00	30.00	1763	133	54.50
CBS30-21	6"Motor	30.00	40.00	2012	133	62.50

Performance curve

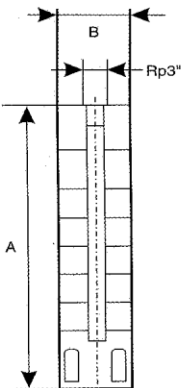
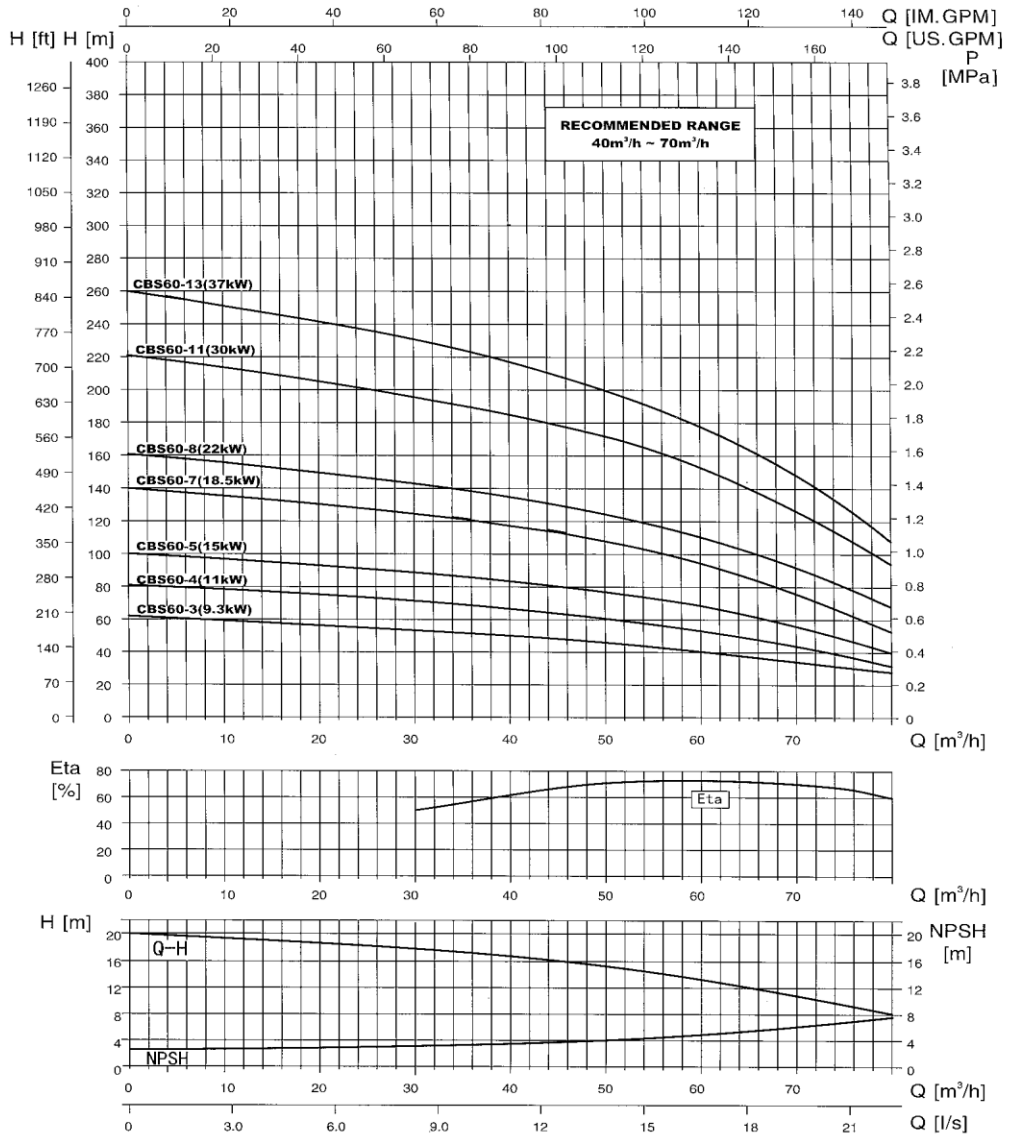
CBS46
3450rpm
60HZ



Pump Type	Motor			Dimension(mm)		Net Weight(Kg)
	Type	Power		Pump		Pump
		KW	HP	A	B	
CBS46-3	6"Motor	7.50	10.00	558	144	16.00
CBS46-4	6"Motor	9.30	12.50	655	144	19.50
CBS46-5	6"Motor	11.00	15.00	745	144	23.00
CBS46-7	6"Motor	15.00	20.00	932	144	29.50
CBS46-9	6"Motor	18.50	25.00	1122	144	36.00
CBS46-11	6"Motor	22.00	30.00	1310	144	42.00
CBS46-15	6"Motor	30.00	40.00	1686	144	56.00

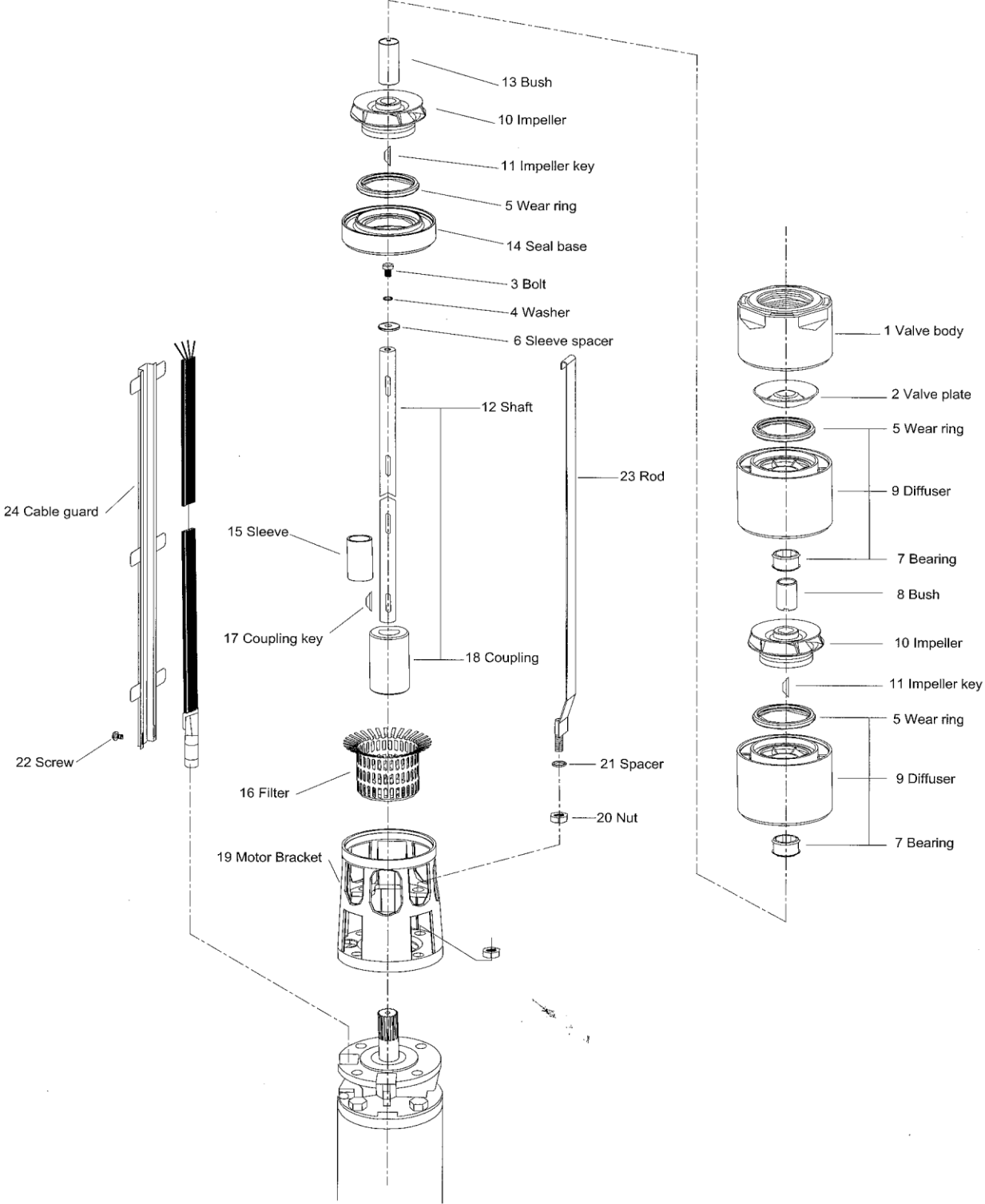
Performance curve

CBS60
3450rpm
60HZ



Pump Type	Motor		Dimension(mm)		Net Weight(Kg)	
	Type	Power		Pump		Pump
		kW	HP	A	B	
CBS60-3	6"Motor	9.30	12.50	558	144	17.00
CBS60-4	6"Motor	11.00	15.00	655	144	20.00
CBS60-5	6"Motor	15.00	20.00	745	144	23.00
CBS60-7	6"Motor	18.50	25.00	932	144	29.50
CBS60-8	6"Motor	22.00	30.00	1030	144	34.00
CBS60-11	6"Motor	30.00	40.00	1310	144	43.50
CBS60-13	6"Motor	37.00	50.00	1498	144	51.00

Parts List



Construction Advantages

- ① **Non–return valve (Casting Stainless steel)**
Strong, tough and robust
Prevents the backflow of water providing the smooth and dependability pump operation.
- ② **Bushing (High Grade Stainless Steel Added with Special Hardening Material)**
Acting as protection between the shaft and the intermediate bearing for maximum resistance against wear and tear.
- ③ **Diffuser (Casting Stainless Steel)**
The strength and toughness of casting stainless steel provides maximum wear and tear resistant against sand.
- ④ **Impeller (Casting Stainless Steel)**
The strength and toughness of casting stainless steel provides maximum wear and tear resistant against sand. Superior design for high hydraulic performance and greater efficiency.
- ⑤ **Shaft (Stainless Steel)**
Finished oversized stainless steel shaft with fitted keys gives the perfect alignment for positive impeller drive.
- ⑥ **Motor Bracket (Casting Stainless Steel)**
Strong,tough and robust.
- ⑦ **Suction Strainer (Stainless Steel)**
Prevents the oversized sediments from entering and jamming the pump.
- ⑧ **Coupling (Stainless Steel)**
Facilitates the perfect alignment between the pump and the motor for a longer life span. Designed according to NEMA standard thus it can be used with any NEMA motors. Superior and user friendly pump design for easy assembling and disassembling of the pump. No special tool required.
- ⑨ **Bearing (Polyurethane)**
Installed in every stage for the dependable and reliable operation.It provides maximum sand handing capability.
- ⑩ **Neck Ring (Polyurethane)**
Installed in every diffuser to provide maximum sand heading capability.

The Leader of Casting Stainless Steel Submersible Borehole Pumps

Utilization of top class material

The CB series pumps are made completely of casting stainless steel. This provides maximum strength, durability, wear and tear resistance against sand or other impurities.

Superior design

Special design make the pump provide the customers with optimum performance at a competitive price. No special tool required for assembling and disassembling the pump.

State of the art manufacturing process

A specialized casting stainless steel process maximizes the toughness of the products, all the Parts have an excellent alignment when assembled for ensures the optimum quality of the pumps performance.



APE PUMPS UK
Manorcroft
Essendine Road, Ryhall
Nr. Stamford. Rutland PE9 4HE
Tel: 01572 721474
Fax: 01780 481725
Email: sales@apepumps.co.uk
Website: www.apepumps.co.uk

